

PLANTING NOTES:

- GENERAL:
1. STATE LAW MANDATES CONTACTING "SUNSHINE STATE ONE CALL OF FLORIDA, INC." AT 811 OR 1-800-432-4770, AT LEAST 48 HOURS PRIOR TO COMMENCEMENT OF CONSTRUCTION.
2. LANDSCAPE CONTRACTOR SHALL CONTACT THE COUNTY, CITY AND/OR UTILITY COMPANIES TO LOCATE ALL UNDERGROUND UTILITIES OR STRUCTURES PRIOR TO DIGGING. LANDSCAPE CONTRACTOR SHALL REPAIR ALL DAMAGE TO UNDERGROUND UTILITIES, AND/OR CONSTRUCTION CAUSED BY UTILITY DAMAGE, AT NO COST TO THE OWNER.
- 2.1. AS PER 155.5204.F. NO DEVELOPMENT, WORK, OR DEMO ACTIVITY SHALL BE ALLOWED WITHIN THE DRIPLINE OF A TREE OR TREE PROTECTION AREA. PENALTIES WOULD BE INCURRED BY THE CONTRACTOR FOR DAMAGES TO THE EXISTING TREES ON SITE FROM THE CONTRACTOR, HIS SUBCONTRACTORS, OR EMPLOYEES. ANY ENCROACHMENT WITHIN THE TREE PROTECTION ZONE, FAILURE TO MAINTAIN THE TREE PROTECTION ZONE, OR ANY DAMAGE TO THE TREE(S) OR CRITICAL ROOT ZONES WILL RESULT IN MITIGATION, THE CAUSE OF DAMAGES WOULD INCLUDE, BUT NOT BE LIMITED TO, STORAGE OF MATERIALS, PLACING FILL OR DEBRIS, DISPOSAL OF PAINT OR SOLVENTS, PARKING OF MACHINES UNDER TREES OR TREE PROTECTION ZONE ENCROACHMENT. VIOLATION OF THIS WILL RESULT IN A FINE OF \$1,000.00 FOR THE FIRST OFFENSE, \$1,500.00 FOR THE SECOND, AND \$2,000.00 FOR THE THIRD, ETC. IF PHYSICAL DAMAGE IS DONE TO THE TREE, AN APPRAISAL OF THE DAMAGES AND RELATED FEES WILL BE DETERMINED BY AN ISA CERTIFIED ARBORIST, AND BE BASED ON ALL OR A PERCENTAGE OF, THE ESTABLISHED VALUE ASSIGNED TO THE TREE.
- 2.2. PRE-CONSTRUCTION MEETING WITH URBAN FORESTRY IS REQUIRED BEFORE ANY PLANT MATERIAL IS INSTALLED ON SITE.
- 2.3. ALL ROAD ROCK, CONCRETE, ASPHALT AND OTHER NON NATURAL MATERIAL BE REMOVED FROM THE PLANTING AREAS PRIOR TO LANDSCAPE INSTALLATION AND BE REPLACED WITH PLANTING SOIL PRIOR TO LANDSCAPE INSTALLATION.
- 2.4. ALL TREE WORK WILL REQUIRE PERMITTING BY A REGISTERED BROWARD COUNTY TREE TRIMMER.
3. CONTRACTOR SHALL FURNISH A "UNIT PRICE BREAKDOWN" FOR ALL MATERIAL TO BE USED IN PROJECT:
- 3.1. MULCH, TOPSOIL, FERTILIZER, STAKING, ETC. SHALL BE INCLUDED IN THE "UNIT BREAKDOWN" COST PER PLANT.
- 3.2. REQUESTS FOR SUBSTITUTIONS AND CHANGES SHALL BE IN WRITING BY LANDSCAPE ARCHITECT PRIOR TO INSTALLATION.
- 3.3. OWNERS REPRESENTATIVE MAY IN HIS/HER DISCRETION ADD OR DELETE UNINSTALLED PLANT MATERIAL FROM PROJECT UTILIZING THE "UNIT BREAKDOWN" UNIT COSTS SUBMITTED.
4. CONTRACTOR(S) MUST OBTAIN SEPARATE LANDSCAPE, IRRIGATION & TREE RELOCATION/REMOVAL PERMITS FROM THE GOVERNING AGENCIES PRIOR TO THE ISSUANCE OF THE FIRST BUILDING PERMIT FOR THE PROJECT.
5. LANDSCAPE CONTRACTOR MUST CALL THE LANDSCAPE INSPECTOR WITH THE GOVERNING AGENCY TO SCHEDULE A PRE CONSTRUCTION MEETING, ALONG WITH THE OWNER'S REPRESENTATIVE AND LANDSCAPE ARCHITECT PRIOR TO ANY SITE PREPARATION.
6. XERISCAPE LANDSCAPE PRINCIPLES SHALL BE APPLIED TO ALL SITES AS SPECIFIED IN THE SOUTH FLORIDA WATER MANAGEMENT DISTRICTS "WATERWISE SOUTH FLORIDA LANDSCAPES" GUIDELINES.
7. LANDSCAPE CONTRACTOR SHALL NOTIFY LANDSCAPE ARCHITECT & GOVERNING AGENCIES OF ANY CHANGES IN MATERIAL FOR APPROVAL, PRIOR TO INSTALLATION.
8. LANDSCAPE CONTRACTOR SHALL REFER TO LANDSCAPE DETAILS FOR ADDITIONAL PLANTING REQUIREMENTS.
9. LANDSCAPE CONTRACTOR SHALL VERIFY ALL ESTIMATED QUANTITIES OF MATERIAL SHOWN ON THE DRAWINGS PRIOR TO SUBMITTING HIS BID. PLANTING PLAN IS TO TAKE PRECEDENCE OVER PLANT LIST/SCHEDULE.
10. ALL PLANT MATERIAL SHALL BE GUARANTEED FOR A PERIOD OF NOT LESS THAN 12 MONTHS AFTER DATE OF FINAL ACCEPTANCE (SEE WATERING NOTE).
11. THE LANDSCAPE ARCHITECT OF RECORD SHALL PROVIDE A CERTIFICATION LETTER TO THE GOVERNING AGENCY CERTIFYING THAT THE LANDSCAPING WAS INSTALLED ACCORDING TO THE PLAN(S) AND SPECIFICATION(S) BEFORE THE LANDSCAPE INSPECTOR MAKES THE FINAL INSPECTION FOR ALL NON-RESIDENTIAL AND PLANNED COMMUNITY RESIDENTIAL PROJECTS.
12. OWNER(S) OF THE LAND OR THEIR AGENTS SHALL BE RESPONSIBLE FOR THE MAINTENANCE OF ALL LANDSCAPE, AFTER INSTALLATION.
- SITE PREPARATION:
13. LANDSCAPE CONTRACTOR SHALL EXERCISE CAUTION TO PROTECT ALL EXISTING SOD AND IRRIGATION SYSTEMS ANY DAMAGE TO THE SOD OR IRRIGATION SHALL BE REPLACED/REPAIRED TO THE ORIGINAL STATE BY THE LANDSCAPE CONTRACTOR AT NO COST TO THE OWNER.
14. GENERAL CONTRACTOR TO REMOVE ALL EXISTING BRAZILIAN PEPPER, FLORIDA HOLLY AND ALL EXOTIC NUISANCE MATERIAL ON SITE, AS REQUIRED AND/OR AS SPECIFIED ON EXISTING PRESERVATION/DISPOSITION PLANS.
15. GENERAL CONTRACTOR SHALL ERADICATE & REMOVE ALL WEEDS & GRASS, CLEAN-UP ANY DEAD MATERIAL, DEBRIS, AND RUBBISH PRIOR TO INSTALLING A NEW PLANT MATERIAL.
16. LANDSCAPE CONTRACTOR IS RESPONSIBLE FOR ALL FINAL GRADING WITHIN PLANTING AREAS.
- PLANTING/TOP SOIL:
17. ALL BUILDING CONSTRUCTION MATERIAL AND FOREIGN MATERIAL SHALL BE REMOVED FROM THE PLANTING AREAS AND REPLACED WITH 80/20 MIX FILL SOIL OR AS OTHERWISE SPECIFIED.
- 17.1. ALL PARKING ISLANDS AND PLANTING BEDS AROUND BUILDINGS, SHALL BE EXCAVATED TO A DEPTH OF 36" MIN. AND REPLACED WITH 80/20 PLANT MIX. OR AS PER SPECIFICATIONS.
- 17.2. TOPSOIL SHALL BE CLEAN AND FREE OF CONSTRUCTION DEBRIS, WEEDS, ROCKS, NOXIOUS PESTS AND DISEASES, AND EXHIBIT A PH OF 6.5 TO 7.0. THE TOPSOIL FOR PLANTING AREAS SHALL BE AMENDED WITH HORTICULTURAL ACCEPTABLE ORGANIC MATERIAL. ALL SOILS USED SHALL BE SUITABLE FOR THE INTENDED PLANT MATERIAL. THE SOURCE OF THE TOPSOIL SHALL BE KNOWN TO THE APPLICANT AND MUST BE ACCEPTABLE TO THE GOVERNING AGENCIES.
- 17.3. LANDSCAPE CONTRACTOR TO SUPPLY & INSTALL 2" SOIL LAYER 80/20 MIX BLANKET FOR ALL NEW SOD AREAS.
- 17.4. THE MIN. PLANTING SOIL DEPTH SHALL BE SIX (6) INCHES FOR GROUND COVERS, FLOWERS, SHRUBS AND HEDGES.
- 17.5. TREES SHALL RECEIVE TWELVE (12) INCHES OF PLANTING SOIL AROUND THE ROOT BALL.
- 17.5. 6" TOP SOIL REQUIRED AROUND & BENEATH ALL PROPOSED PLANT MATERIAL ROOT BALLS, (UNLESS OTHERWISE NOTED)
- 17.6. CLEAN SAND SHALL BE USED TO BACKFILL ARID CLIMATE PALMS.
- 17.7. NATIVE TOPSOIL ON THE SITE SHALL BE RETAINED ON-SITE AND USED WHEN THERE IS SUFFICIENT QUANTITY TO COVER AT LEAST SOME OF THE ON-SITE LANDSCAPED AREAS.
- PLANT MATERIAL:
18. LANDSCAPE CONTRACTOR IS RESPONSIBLE FOR ATTAINING PERMITS PRIOR TO INSTALLATION OF NEW PLANT MATERIAL.
19. ALL GUYING, STAKING & TREE BRACES SHALL BE THE RESPONSIBILITY OF THE LANDSCAPE CONTRACTOR. REFER TO PLANTING DETAILS FOR APPROVED METHODS. LANDSCAPE CONTRACTOR SHALL RETURN 12 MONTHS AFTER COMPLETION OF JOB AND REMOVE ALL GUYS, STAKES & TREE BRACES.
20. ALL PLANT MATERIAL SYMBOLS SHOWN ON LANDSCAPE PLAN(S) SHALL BE CONSIDERED DIAGRAMMATIC AND SHOULD BE ADJUSTED IN

NOTE:
AS PER CITY ORDINANCE(S) §50.02(A) (4) AND §100.35(E), STREET TREES SHALL NOT BE PLACED ON TOP OF OR 5' OF EITHER SIDE OF ANY CITY OWNED UTILITY INFRASTRUCTURE. ALSO, PLEASE NOTE THAT NO TREES, SHRUBBERY OR OBSTRUCTION SHALL BE PLACED WITHIN A 3' RADIUS OF A CITY OWNED SEWER LATERAL CLEANOUT OR WATER &/OR REUSE METER.

- THE FIELD BY CONTRACTOR TO AVOID UTILITY CONFLICTS AND OTHER OBSTRUCTIONS, WHERE SAID ADJUSTMENT CANNOT BE DONE WITHOUT SIGNIFICANT CHANGE TO THE PLANTING DESIGN. CONTRACTOR SHALL CONTACT THE LANDSCAPE ARCHITECT AND/OR OWNER'S REPRESENTATIVE FOR APPROVAL, PRIOR TO INSTALLATION.
- 20.1. TREES SHALL BE PLACED A MINIMUM OF 6 FT. FROM UNDERGROUND UTILITIES AND ALL SHADE TREES INSTALLED WITHIN SIX FEET OF PUBLIC/PRIVATE INFRASTRUCTURE (INCLUDING CURBS, WALKS, PAVEMENT, ETC.) SHALL UTILIZE A ROOT BARRIER SYSTEM, AS APPROVED BY THE GOVERNING AGENCY.
- 20.2. ALL PLANT MATERIAL SHALL BE CLEAR (7-1/2 FT. IN FRONT & SIDES) WITH 4 FT. (8' REAR) AROUND ALL FIRE HYDRANTS, CHECK VALVES, FIRE DEPT. EQUIPMENT, ETC., OR AS REQUIRED.
- 20.3. SHADE TREES SHALL BE PLANTED MIN. OF 15 FT. FROM LIGHT POLES, ALL SMALL TREES AND PALMS TO BE PLANTED MIN. OF 7.5 FT. FROM LIGHT POLES, OR AS OTHERWISE SPECIFIED.
- 20.4. ALL SHADE TREES SHALL HAVE A 4 1/2" MIN. CLEAR TRUNK HEIGHT (UNLESS OTHERWISE SPECIFIED) AND CALIPER SHALL BE MEASURED AT D.B.H. AT TIME OF PLANTING.
- 20.5. NO TREES OR OTHER PLANT MATERIAL MAY BE PLANTED IN RIGHTS-OF-WAY (IE. SWALE AREAS) WITHOUT A PERMIT. NO SHRUB SPECIES WITH A MATURE HEIGHT THAT WILL BLOCK THE CLEAR SIGHT ZONE FROM 30 INCHES IN HEIGHT TO SIX FEET IN HEIGHT WILL BE APPROVED IN SAID SWALE AREAS.
- 20.5.1. ALL HEDGE MATERIAL REQUIRED FOR SCREENING PURPOSES SHALL BE PLANTED SO AS TO BE TIP TO TIP WITHIN SIX MONTHS OF PLANTING AND MAINTAINED SO AS TO FORM A CONTINUOUS VISUAL SCREEN. ADJUST SPACING AS NECESSARY AND/OR PROVIDE ADDITIONAL PLANTS TO PROVIDE AN ADEQUATE SCREEN.
- 20.5.2. SHRUBS USED AS HEDGES SHALL BE FL NO. 1 OR BETTER WITH A MIN. HT. OF 24" AND A MIN. SPREAD, OF 18". WHEN MEASURED IMMEDIATELY AFTER PLANTING & SHALL BE A MIN. OF 3' HT. WITHIN 2 YRS. FROM THE DATE OF PLANTING.
21. ALL SIZES SHOWN FOR PLANT MATERIAL ON THE PLAN ARE TO BE CONSIDERED MINIMUM. ALL PLANT MATERIAL MUST MEET OR EXCEED THESE MINIMUM REQUIREMENTS FOR BOTH HEIGHT AND SPREAD. ANY OTHER REQUIREMENTS FOR SPECIFIC SHAPE OR EFFECT AS NOTED ON THE PLAN SHALL ALSO BE REQUIRED FOR ACCEPTANCE. ALL TREES ARE TO BE SINGLE TRUNK UNLESS OTHERWISE NOTED ON THE PLANS.
22. ALL "GROUND COVER" REQUIRES 75% COVERAGE AND 100% WITHIN 3 MONTHS OF INSTALLATION.
16. PROPOSED UNDERSTORY PLANT MATERIAL SHALL NOT BE PLANTED ON TOP OF TREE OR PALM ROOT BALLS.
17. ALL PLANT MATERIAL SHALL BE FERTILIZED UPON INSTALLATION, SEE SPECIFICATIONS.

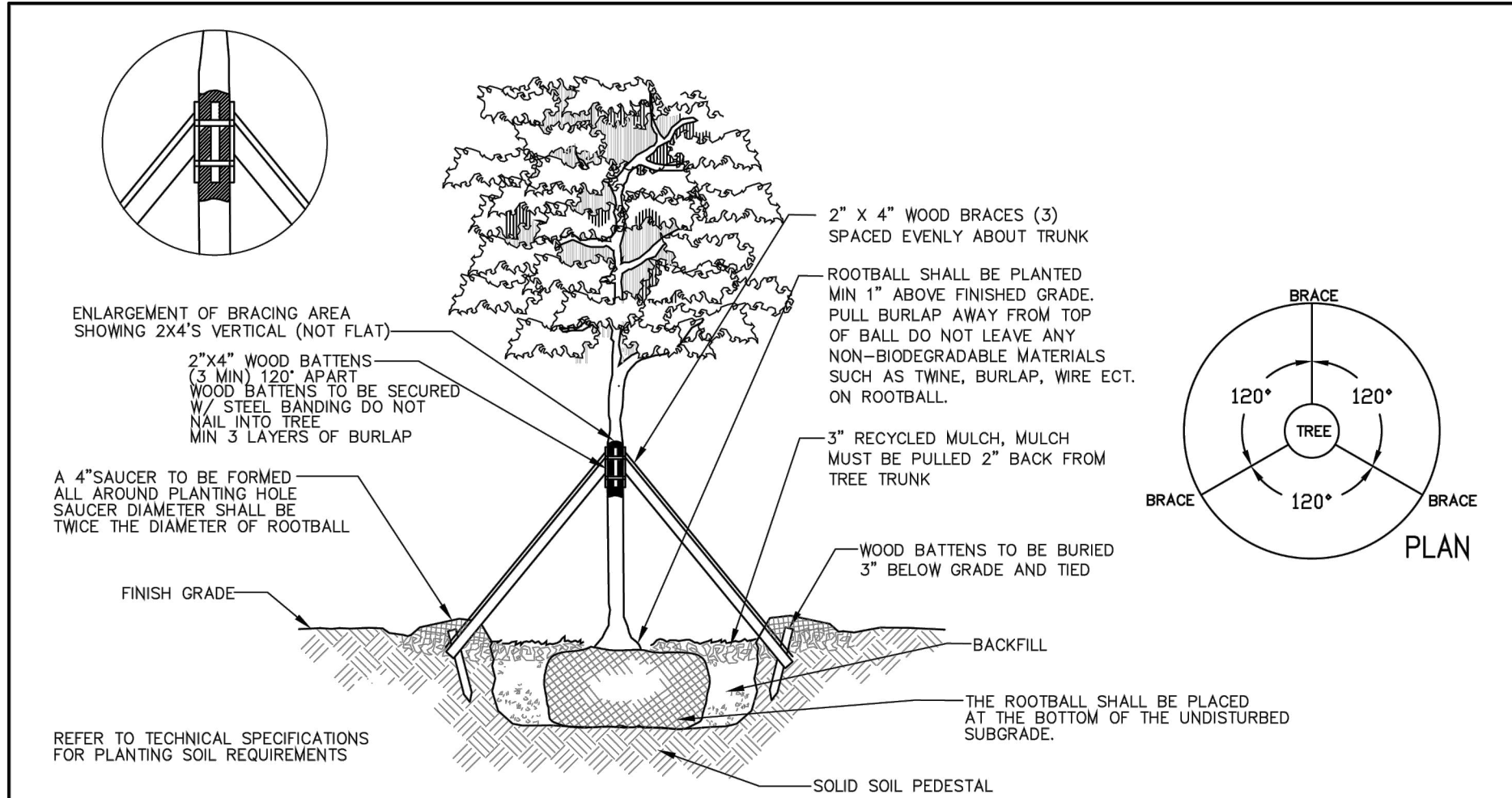
- MULCH:
18. A THREE (3") INCH MIN. DEPTH OF APPROVED ORGANIC MULCH MATERIAL (MEASURED AT THE TIME OF FINAL INSPECTION) SHALL BE INSTALLED IN ALL LANDSCAPED AREAS NOT COVERED BY PAVEMENT, SOD, DECORATIVE STONES, OR ANNUAL/PERENNIAL FLOWER BEDS. ADDITIONALLY, EACH TREE SHALL HAVE A RING OF ORGANIC MULCH AT THE PERIMETER OF THE ROOT BALL:
- 18.1. THE USE OF CYPRESS MULCH IS PROHIBITED, AS WELL AS ANY MULCH CONTAINING ARSENIC.
- 18.2. A MIN. MULCH WIDTH OF 18" BEYOND THE TRUNK OF ALL TREES, PALMS, HEDGES AND SHRUBS.
- 18.3. MULCH SHALL NOT BE PLACED CLOSER THAN 3" FROM THE TRUNK OF ALL TREES AND PALMS; THE MOUNDING OF MULCH IS NOT ACCEPTABLE.
- 18.4. MULCH SHALL BE USED IN CONJUNCTION WITH GROUND COVER IN ALL PLANTING BEDS (UNLESS SPECIFIED OTHERWISE).
- 18.5. DO NOT MULCH WITHIN DESIGNATED "PRESERVE AREAS" (UNLESS SPECIFIED OTHERWISE).

- LANDSCAPE/LAWN AREAS:
19. LANDSCAPE MATERIAL SHALL BE PLACED ON ALL AREAS NOT COVERED BY MAIN AND ACCESSORY STRUCTURES, WALKS AND VEHICULAR USE AREAS. LANDSCAPE MATERIAL SHALL EXTEND TO ANY ADJUTING STREET, PAVEMENT EDGE AND TO THE MEAN WATER LINE OF ANY ADJUTING CANAL, LAKE OR WATERWAY.
- 19.1. ALL AREAS DISTURBED DURING CONSTRUCTION SHALL BE SODDED WITH ST. AUGUSTINE FLORATAM, UNLESS OTHERWISE NOTED.
- 19.2. CONTRACTOR SHALL INCLUDE IN HIS BID ST. AUGUSTINE FLORATAM SOD FOR ALL LANDSCAPE AREAS VOID OF ANY PLANT MATERIAL (ie. GROUND COVER, SHRUBS, SOD), NOT SPECIFIED IN PLANS, WITHIN THE LIMITS OF THE PROJECT. CONTRACTOR SHALL CONTACT LANDSCAPE ARCHITECT PRIOR TO BIDDING IN REFERENCE TO "PROJECT LIMITS".
- 19.3. LANDSCAPING MATERIAL OTHER THAN SOD ARE NOT ALLOWED WITHIN (5) FIVE FEET OF ANY PORTION OF CITY OWNED UTILITIES WITHIN THE PUBLIC STREET RIGHT-OF-WAY INCLUDING METERS, HYDRANTS, SERVICE LINES ETC.

- WATERING NOTE:
20. ALL NEW PLANT MATERIAL SHALL HAVE AN ESTABLISHMENT PERIOD OF 12 MONTHS FROM THE TIME OF FINAL ACCEPTANCE. DURING THE ESTABLISHMENT PERIOD THE CONTRACTOR WILL BE RESPONSIBLE FOR THE FOLLOWING ITEMS: WATERING PER THE SCHEDULE ATTACHED (23). RE-SETTING OF PLANTS, REPLACEMENT OF SICK OR DEAD PLANTS, ALL OTHER CARE REQUIRED FOR PROPER GROWTH. ANY PLANT MATERIAL NOT IN HEALTHY GROWING CONDITION SHALL BE REPLACED BY THE CONTRACTOR AT NO ADDITIONAL COST TO THE CLIENT.
- 20.1. THE 12 MONTH WARRANTY/ESTABLISHMENT PERIOD SHALL BE EXTENDED BY 45 DAYS FOR ALL REPLACEMENT PLANT MATERIAL.
- 20.2. AT THE CLIENT'S EXPENSE, THE CONTRACTOR WILL REPLACE ANY PLANT MATERIAL DAMAGED AS A RESULT OF AUTOMOBILE ACCIDENTS OR "ACTS OF GOD" LIMITED TO HAIL, FREEZE, LIGHTNING, AND WINDS EXCEEDING 75 MPH AS DEFINED BY THE MIAMI HURRICANE CENTER.

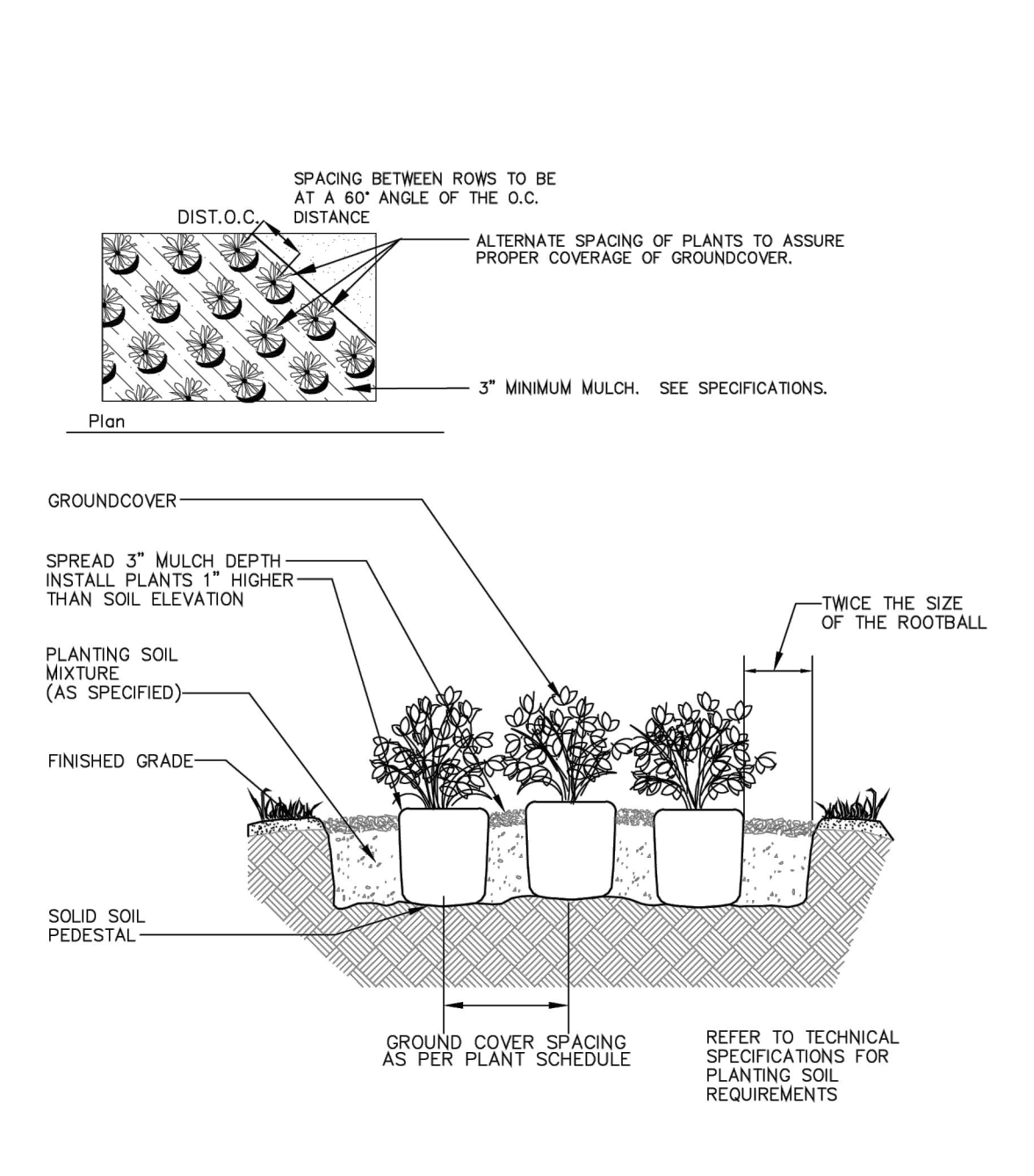
21. WATERING CONTRACT SHALL BE INCLUDED IN CONTRACTORS BID FOR ANY PLANT MATERIAL THAT HAS BEEN ROOT PRUNED, INSTALLED, DISTURBED BY CONSTRUCTION, OR WHERE PROPOSED OR EXISTING IRRIGATION SYSTEMS ARE NOT FUNCTIONAL. ALL WARRANTIES SHALL BE IN PLACE BY CONTRACTOR REGARDLESS OF NON-OPERATIONAL IRRIGATION SYSTEMS OR AREAS WHERE NO IRRIGATION IS PROPOSED.
22. WATERING SCHEDULE (FIRST 6 MONTHS):
- | WEEK(S) | FREQUENCY (WATERING DAYS) |
|------------|---------------------------|
| 1 THRU 6 | MON., WED., THURS., SAT. |
| 7 THRU 12 | MON., WED., SAT. |
| 13 THRU 24 | WED., SAT. |

*6 MONTH WATERING SCHEDULE IS A MINIMUM. CONTRACTOR IS RESPONSIBLE FOR WATERING PLANT MATERIAL FOR THE FULL 12 MONTH ESTABLISHMENT/WARRANTY PERIOD.



REVISIONS		LANDSCAPE STANDARDS	
BY	DATE	URBAN FORESTRY CITY OF POMPAÑO BEACH	SINGLE TRUNK TREE GREATER THAN 4" CALIPER
TCW	APRIL 2010		
		SCALE: N.T.S.	APPROVED BY: _____ DATE: APRIL 2010 DWG. NO. 102-1
			URBAN FORESTER

1 LARGE SINGLE TRUNK TREE PLANTING DETAIL



2 SHRUB PLANTING DETAIL

REVISIONS		LANDSCAPE STANDARDS	
BY	DATE	URBAN FORESTRY CITY OF POMPAÑO BEACH	MINIMUM TREE CLEARANCE FROM LIGHT FIXTURES DETAIL
TCW	APRIL 2010		
		SCALE: N.T.S.	APPROVED BY: _____ DATE: AUGUST 2010 DWG. NO. 301-1
			URBAN FORESTER

3 GROUND COVER PLANTING DETAILS

4 MIN. TREE CLEARANCE FROM LIGHT FIXTURES

REVISIONS		LANDSCAPE STANDARDS	
BY	DATE	URBAN FORESTRY CITY OF POMPAÑO BEACH	GROUND COVER PLANTING DETAIL
TCW	APRIL 2010		
		SCALE: N.T.S.	APPROVED BY: _____ DATE: APRIL 2010 DWG. NO. 201-1
			URBAN FORESTER

5 MIN. TREE CLEARANCE FROM LIGHT FIXTURES

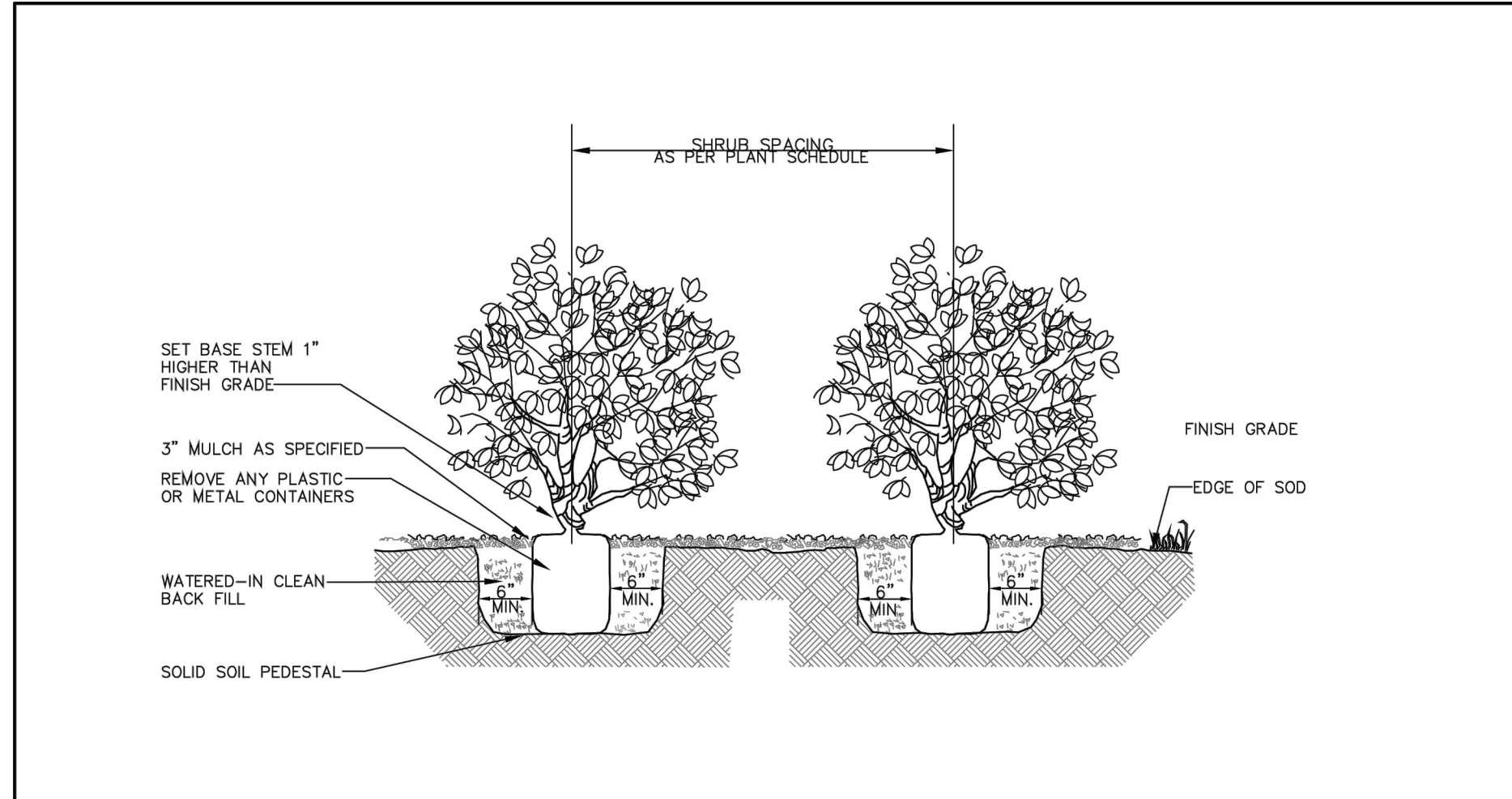
6 MIN. TREE CLEARANCE FROM LIGHT FIXTURES

7 MIN. TREE CLEARANCE FROM LIGHT FIXTURES

8 MIN. TREE CLEARANCE FROM LIGHT FIXTURES

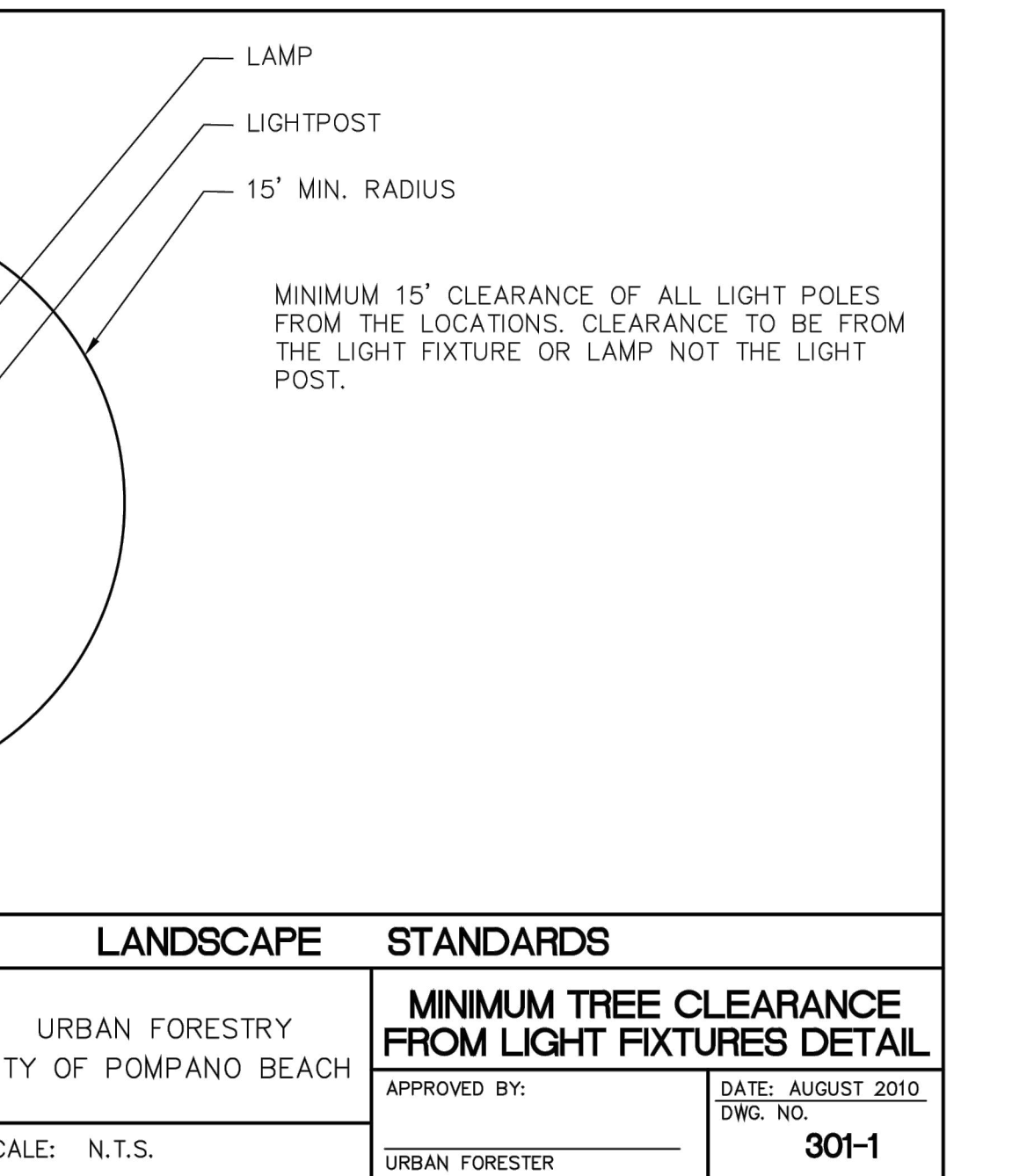
9 MIN. TREE CLEARANCE FROM LIGHT FIXTURES

10 MIN. TREE CLEARANCE FROM LIGHT FIXTURES



REVISIONS		LANDSCAPE STANDARDS	
BY	DATE	URBAN FORESTRY CITY OF POMPAÑO BEACH	SHRUB PLANTING DETAIL
TCW	APRIL 2010		
		SCALE: N.T.S.	APPROVED BY: _____ DATE: APRIL 2010 DWG. NO. 200-1
			URBAN FORESTER

1 LARGE SINGLE TRUNK TREE PLANTING DETAIL



2 SHRUB PLANTING DETAIL

REVISIONS		LANDSCAPE STANDARDS	
BY	DATE	URBAN FORESTRY CITY OF POMPAÑO BEACH	MINIMUM TREE CLEARANCE FROM LIGHT FIXTURES DETAIL
TCW	APRIL 2010		
		SCALE: N.T.S.	APPROVED BY: _____ DATE: AUGUST 2010 DWG. NO. 301-1
			URBAN FORESTER

3 GROUND COVER PLANTING DETAILS

4 MIN. TREE CLEARANCE FROM LIGHT FIXTURES

REVISIONS		LANDSCAPE STANDARDS	
BY	DATE	URBAN FORESTRY CITY OF POMPAÑO BEACH	GROUND COVER PLANTING DETAIL
TCW	APRIL 2010		
		SCALE: N.T.S.	APPROVED BY: _____ DATE: APRIL 2010 DWG. NO. 201-1
			URBAN FORESTER

5 MIN. TREE CLEARANCE FROM LIGHT FIXTURES

6 MIN. TREE CLEARANCE FROM LIGHT FIXTURES

7 MIN. TREE CLEARANCE FROM LIGHT FIXTURES

8 MIN. TREE CLEARANCE FROM LIGHT FIXTURES

9 MIN. TREE CLEARANCE FROM LIGHT FIXTURES

10 MIN. TREE CLEARANCE FROM LIGHT FIXTURES

Digitally signed by Michael D Conner Date: 2024.07.10 10:21:57 -04'00'

Michael D Conner

MINOR SITE PLAN SUBMITTAL ELEVATIONS SHOWN ARE IN FEET AND INCHES

PZ24-1200017 09/04/2024